



LED Permanent Beacon



LED Traffic Light Combination with mounting bracket (accessory)



Clear lenses ensure signalling effect even in direct sunlight

- LED Beacon for traffic light combinations
- Clear signalling effect even in direct sunlight
- Maintenance-free LED technology
- Innovative fixing bracket for simple mounting

**i TECHNICAL SPECIFICATIONS:**

Life duration up to 50,000 hrs

|                                 |  |
|---------------------------------|--|
| <b>Dimensions (Ø x Height):</b> | 150 mm x 154 mm  |
| <b>Housing:</b>                 | PC/ABS-Blend, grey   |
| <b>Lens:</b>                    | PC, transparent  |
| <b>Fixing:</b>                  | Base mounting, bracket mounting (accessory), tube mounting (accessory)   |
| <b>Connection:</b>              | Screw terminal max. 1.5 mm <sup>2</sup>  |
| <b>Installation position:</b>   | As required  |
| <b>Cable entry:</b>             | From top or bottom with cable gland M20 x 1.5 mm or from the back with rubber grommet Ø 6-12 mm, included in assembly. |

**🛒 ORDER SPECIFICATIONS:**

|                     |                   |                   |                   |
|---------------------|-------------------|-------------------|-------------------|
| Voltage             | 12-24 V DC        | 115 V AC          | 230 V AC          |
| Current consumption | < 200 mA          | < 35 mA           | < 35 mA           |
| red                 | <b>890 120 55</b> | <b>890 120 67</b> | <b>890 120 68</b> |
| green               | <b>890 220 55</b> | <b>890 220 67</b> | <b>890 220 68</b> |
| yellow              | <b>890 320 55</b> | <b>890 320 67</b> | <b>890 320 68</b> |

**🏠 ACCESSORIES:**

**FIXING BRACKET**

|                                  |                   |
|----------------------------------|-------------------|
| Fixing bracket for one beacon    | <b>975 890 33</b> |
| Fixing bracket for two beacons   | <b>975 890 34</b> |
| Fixing bracket for three beacons | <b>975 890 35</b> |
| Fixing bracket for four beacons  | <b>975 890 37</b> |

Mounting material and connecting grommet included in assembly. Further information can be found on page 178.

**CONNECTING GROMMET**

|   |                   |
|---|-------------------|
| Connecting grommet for traffic light combinations | <b>975 890 25</b> |
|---|-------------------|

**TUBE ADAPTOR**

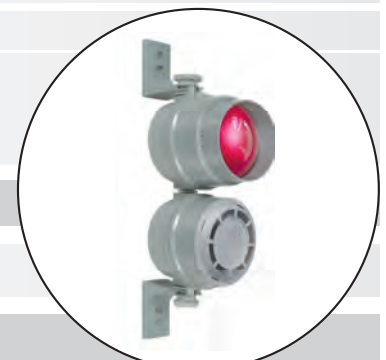
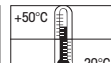
|  |                   |
|--|-------------------|
| Adaptor for tube mounting (suitable for Ø 75 mm tubes, see page 177) | <b>975 890 36</b> |
|--|-------------------|

**⚠️ ADDITIONAL INFORMATION:**

Traffic light configurator at [www.werma.com](http://www.werma.com)

**📐 TECHNICAL DIAGRAMS: see page 326**

See note on page 347



The LED Beacon 890 in combination with Multi-Tone Sounder 190 (see page 216)

